

# Tire Wear Infographic



## Make the right buy

Buy good quality tyres that meet EMSA standards. Poor quality or counterfeit branded tyres wear down faster and need replacing more frequently.



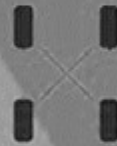
## Check your tires weekly

Regular inspections for signs of wear and tear can prevent costly damage to the tyres or car in the future.



## Maintain proper air pressure

Check the air pressure at least once a month with a calibrated gauge, especially during hot weather.

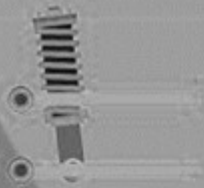


## Rotate the tyres

Periodic rotation will ensure that the tyre wear patterns are more uniformly distributed across the four tyres.

# 7 TIPS

## TO EXTEND THE LIFE OF YOUR CAR TYRES IN THE UAE



## Keep an eye on the wheel alignment

If you notice that your car starts to pull one way or the other, the improperly aligned wheels and axles need to be reset to prevent tyres from premature wear.



## Repair and replace

Minor issues can be repaired, but sometimes it will be more economical to replace a tire. According to EMSA, tyres need to be replaced after 5 years.

## Pay heed to vibrations

A car vibrating on a smooth road at high speeds is a bad sign. If the wheels aren't balanced, the car tyres and suspension components will start to wear down.

