

Workplace Safety – Know When to Say When – Know When to Stop Work Infographic



WORKPLACE SAFETY

KNOW WHEN TO SAY WHEN – KNOW WHEN TO **STOP** WORK

While **qualified electrical line workers** and **electricians** are often willing to go above and beyond the call, some jobs require **specific knowledge and experience**. That's why it's important to **stop and reassess** a situation if there is ever doubt about a job's task or a procedure's requirement. As qualified electrical workers, it is our jobs to ensure all trades are aware of **danger** related to **unqualified electrical work**.

ALWAYS ASK YOURSELF:

1 Have I been properly trained to safely complete this job task?



2 Have I worked on this task before, and do I have the right training and experience?



3 Do I have the proper tools for this job?



4 Is the hierarchy of risk controls being followed to ensure that preventive and protective risk controls are being implemented?



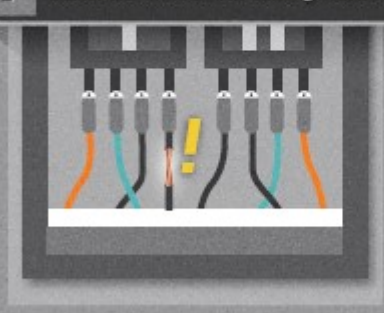
5 Has a proper risk assessment been performed?



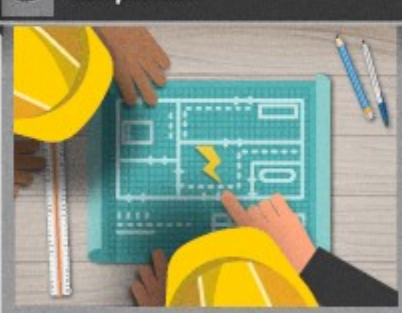
6 Are all conductors and circuit parts in an electrically safe working condition?



7 Are these parts properly guarded to reduce the likelihood of electrical contact or arcing faults?



8 Are all applicable procedures and job planning procedures completed?



9 Am I confident about completing this job without risk or putting others at risk?



KNOW WHEN TO SAY WHEN – IT CAN SAVE YOUR LIFE, AND THE LIVES OF THOSE WORKING WITH YOU.

Please share this free resource to save lives



www.facebook.com/ESFI.org



www.twitter.com/ESFI.org



www.youtube.com/ESFI.org

While qualified electrical line workers and electricians are often willing to go above and beyond the call, some jobs require specific knowledge and experience. That's why it's important to stop and reassess a situation if there is ever a doubt about a job's task or a procedure's requirement. As qualified electrical workers, it is our job to ensure all trades are aware of danger related to unqualified electrical work.

1. Have I been properly trained to safely complete this job task?
2. Have I worked on this task before, and do I have the right training and experience?
3. Do I have the proper tools for this job?

4. Is the hierarchy of risk controls being followed to ensure that preventative and protective risk controls are being implemented?
5. Has a proper risk assessment been performed?
6. Are all conductors and circuit parts in an electrically safe working condition?
7. Are these parts properly guarded to reduce the likelihood of electrical contact or arcing faults?
8. Are all applicable procedures and job planning procedures completed?
9. Am I confident about completing this job without risk or putting others at risk?

Know when to say when – it can save your life, and the lives of those working with you.

Source: *Republished with permission from Electrical Safety Foundation International (ESFI*